

All Saints Road Wimbledon, SW19 1BU

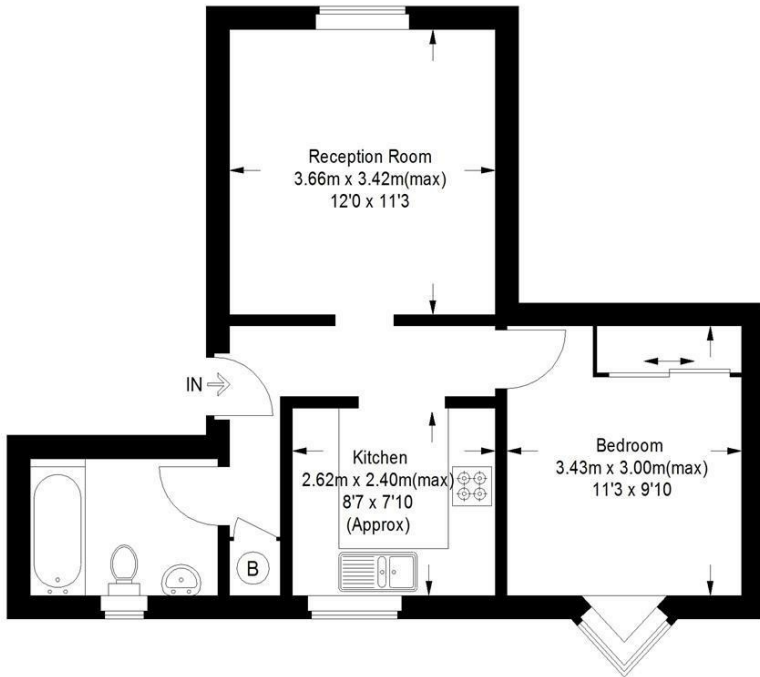
£315,000 Leasehold



A ONE BEDROOM, FIRST FLOOR PERIOD CONVERSION FLAT in good condition with large separate reception room and a good size modern kitchen. In a great location being within easy reach of South Wimbledon Underground Station as well as Wimbledon town centre with its abundance of bars and restaurants. The property comes with the great benefit of having NO ONWARD CHAIN and would be an ideal first time buy.

All Saints Road, SW19

Approximate Gross Internal Area
40.5 sq m / 436 sq ft



This floor plan is for representation purposes only and is not drawn to scale. Whilst every attempt has been made to ensure its accuracy measurements are approximate only and should be checked before making any decisions reliant upon them.
Copyright Bespokeplans.co.uk 2021 (ID737938)

- Victorian Schoolhouse Conversion
- Excellent Transport Links
- Modern Kitchen
- Double Bedroom with Fitted Wardrobes
- Large Bathroom
- Great Condition
- Ideal First Time Purchase or Buy To Let



Energy Efficiency Rating		Environmental Impact (CO ₂) Rating			
Very energy efficient - lower running costs	Current	Potential	Very environmentally friendly - lower CO ₂ emissions	Current	Potential
(92 plus) A			(82 plus) A		
(81-91) B			(81-91) B		
(69-80) C			(69-80) C		
(55-68) D			(55-68) D		
(38-54) E			(38-54) E		
(21-37) F			(21-37) F		
(1-20) G			(1-20) G		
Not energy efficient - higher running costs			Not environmentally friendly - higher CO ₂ emissions		
England & Wales	EU Directive 2002/91/EC	73 74	England & Wales	EU Directive 2002/91/EC	

For Free Mortgage Quote and Best Mortgage Rates, call an Ellisons Mortgage Advisor on 020 8944 9494



Although these particulars are believed to be correct, their accuracy is not guaranteed and they do not form part of any contract.

Celebrating 30 years of successful Sales and Lettings in Merton

